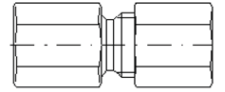


TN 147 R

RACOR RECTO HEMBRA ROSCA GAS CILINDRICA

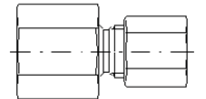


REF.	DESCRIPCIÓN	ROSCA
790618	UNION TN 147 6-L	1/8
790814	UNION TN 147 8-L	1/4
790838	UNION TN 147 8-L	3/8
790812	UNION TN 147 8-L	1/2
791014	UNION TN 147 10-L	1/4
791038	UNION TN 147 10-L	3/8
791012	UNION TN 147 10-L	1/2
791238	UNION TN 147 12-L	3/8
791212	UNION TN 147 12-L	1/2
791512	UNION TN 147 15-L	1/2
791812	UNION TN 147 18-L	1/2
792234	UNION TN 147 22-L	3/4
792801	UNION TN 147 28-L	1"
7935114	UNION TN 147 35-L	1 1/4
7942112	UNION TN 147 42-L	1 1/2

REF.	DESCRIPCIÓN	ROSCA
791038S	UNION TN 147 10-S	3/8
791238S	UNION TN 147 12-S	3/8
791412	UNION TN 147 14-S	1/2
791612	UNION TN 147 16-S	1/2
792034	UNION TN 147 20-S	3/4
792501	UNION TN 147 25-S	1"
7930114	UNION TN 147 30-S	1 1/4
7938112	UNION TN 147 38-S	1 1/2

TN 103

RACOR HEMBRA PARA MANÓMETRO

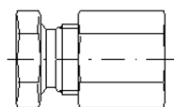


REF.	DESCRIPCIÓN	ROSCA
790614	UNION TN 103 6-L	1/4
790814	UNION TN 103 8-L	1/4
791014	UNION TN 103 10-L	1/4
791214	UNION TN 103 12-L	1/4

REF.	DESCRIPCIÓN	ROSCA
790612S	UNION TN 103 6-S	1/2
790812S	UNION TN 103 8-S	1/2
791012S	UNION TN 103 10-S	1/2
791212S	UNION TN 103 12-S	1/2

TN 296

TAPÓN OBTURACIÓN MACHO



REF.	DESCRIPCIÓN	ROSCA
823506L	TAPON MACHO TN 296 6L	12x1.5
823508L	TAPON MACHO TN 296 8L	14x1.5
823510L	TAPON MACHO TN 296 10L	16x1.5
823512L	TAPON MACHO TN 296 12L	18x1.5
823515	TAPON MACHO TN 296 15L	22x1.5
823518	TAPON MACHO TN 296 18L	26x1.5
823522	TAPON MACHO TN 296 22L	30x200
823528	TAPON MACHO TN 296 28L	36x200
823535	TAPON MACHO TN 296 35L	45x200
823542	TAPON MACHO TN 296 42L	52x200

REF.	DESCRIPCIÓN	ROSCA
823506L	TAPON MACHO TN 296 t. 6S	14x1.5
823508L	TAPON MACHO TN 296 t. 8S	16x1.5
823510L	TAPON MACHO TN 296 t. 10S	18x1.5
823512L	TAPON MACHO TN 296 t. 12S	20x1.5
823515	TAPON MACHO TN 296 t. 14S	22x1.5
823518	TAPON MACHO TN 296 t. 16S	24x1.5
823522	TAPON MACHO TN 296 t. 20S	30x200
823528	TAPON MACHO TN 296 t. 25S	36x200
823535	TAPON MACHO TN 296 t. 30S	42X200
823542	TAPON MACHO TN 296 t. 38S	52X200